



Master of Science in Nursing (MSN) and Graduate Certificates



PennState
World Campus

A world of possibilities.
Online.

Table of Contents

Online Graduate Programs in Nursing.....	3	Nurse Administrator Graduate Certificate.....	6
Master of Science in Nursing	4	Nurse Educator Graduate Certificate.....	6
MSN Curriculum	5	Begin Your Application Today	7
Graduate Certificates	6		

Thanks to the convenience of online learning through Penn State World Campus, you can access the Penn State College of Nursing’s high-quality, renowned programs no matter where life takes you.

Reputation—The baccalaureate degree program in nursing, master’s degree program in nursing, Doctor of Nursing Practice program, and postgraduate APRN certificate program at Penn State are accredited by the Commission on Collegiate Nursing Education, 655 K Street NW, Suite 750, Washington, DC 20001, 202-887-6791. Further information can be found at www.ccneaccreditation.org.

Convenience—We understand the need for flexible and convenient learning options, using technology not just for convenience, but also to support learning outcomes.

Student Services—Even from a distance, you can access a full range of services dedicated to handling the unique challenges faced by returning adult students.

The Real Penn State—There will be no distinction on your diploma that your courses were completed at a distance. Our online programs are led by the same dedicated, expert faculty who teach on campus.

Online Graduate Programs in Nursing

Are you ready to take your nursing career to the next level with an advanced degree? As you review your options, remember that not all nursing degrees are the same. Penn State's nursing programs are led by expert faculty from the College of Nursing and conveniently offered online through Penn State World Campus.

Our graduate-level nursing degrees and certificates include:

- › Master of Science in Nursing (MSN)
- › Nurse Administrator Graduate Certificate
- › Nurse Educator Graduate Certificate
- › Doctor of Nursing Practice (DPN)
Details in a separate brochure

No matter where you are in the world, you can pursue one of these credentials, backed by a world-class reputation and accreditation, a student support team, and a powerful network of students, mentors, and alumni.

We hope to be your partner in lifelong learning. Regardless of your ultimate educational goals—bachelor's, master's, or doctoral degree—Penn State World Campus has a pathway to help you get there.

For more information on the entire portfolio of nursing programs available, visit: worldcampus.psu.edu/nursing



“I feel like I can be a better liaison between the business world of health care and advocating for the nurses. I’ve been able to see how a nursing administrator can sit next to the CFO and have conversations about how to make these improvements.”

—Rena E., MSN
Graduate,
Nurse Administrator Option

Master of Science in Nursing

As a registered nurse with a bachelor's degree in nursing, you've already made a substantial commitment to the field of nursing. Take the next step toward advancing your career in leadership or educational positions with Penn State's online Master of Science in Nursing (MSN).

One Degree, Two Options

As a student in this program, you will take 9 credits of core courses. Then, depending on your professional goals, you will choose one of the following options:

Nurse Administrator

The curriculum in this option can provide you with sophisticated knowledge of organizational leadership, health policy, and evidence-based health care delivery. The courses can also help prepare you for national certification as a nurse executive.

After successful completion of the program, your career path could connect you to leadership positions, such as nurse administrator/manager, nurse executive, chief nursing officer, vice president of patient care, or director of quality improvement.

Nurse Educator

The courses in this option can give you an in-depth understanding of evidence-based teaching and learning principles, curriculum development, and evaluative techniques in the field of nursing. In addition, the curriculum can help to prepare you for national certification as a nurse educator.

As a graduate of the program, you could be qualified for health-related educator roles, such as director of nurse education/learning, nursing instructor/faculty, patient educator, staff developer, or health care consultant.

worldcampus.psu.edu/msn



“The Penn State degree is well known; it was the obvious choice. I really enjoyed the program and where it has taken me.”

—Ashley F., MSN, RN
Graduate, Master of Science in Nursing



“I am able to use the things that I’ve learned in my MSN courses, such as evaluative techniques and debriefing skills, to help nursing students obtain more meaningful experience in their learning.”

—Kristal H., MSN, RN
Graduate, Master of Science
in Nursing

MSN Curriculum

Penn State’s 36-credit online MSN program can help you build on your existing nursing experience with the additional knowledge and skills you need to lead change in a dynamic health care environment.

Your curriculum will include:

- › Core courses—All students enrolled in the MSN program will take the same core courses to build a foundation of learning.
- › Option-specific courses—You will choose either the Nurse Administrator option or the Nurse Educator option and take the courses related to those options.

- › Clinical practicum—You will be required to complete 270 hours of a clinical practicum after finishing your option-specific courses. This can be completed in a convenient location based on your current work schedule. (Criminal background checks will be required, with the cost being incurred by the individual student.)

To view the course descriptions and a current list of available electives for each option, visit:

worldcampus.psu.edu/msn-courses

Graduate Certificates

The Nurse Administrator Graduate Certificate and the Nurse Educator Graduate Certificate are excellent stand-alone credentials, or they can serve as a way to step up to the MSN degree. Once you have completed one of the certificates, you may apply the credits toward the corresponding option of the master's degree, if you apply and are granted admission to the program. The MSN degree program and the graduate certificates cannot be completed simultaneously.

Nurse Administrator Graduate Certificate

The curriculum in the 9-credit Nurse Administrator Graduate Certificate can provide you with the necessary decision-making and problem-solving strategies for a role in nursing administration.

Expand your knowledge in the business of health care, with topics including health care economics, fiscal planning, and data management—all while learning how these topics impact patient safety and risk management.

The certificate will cover such factors as organizational structure, power, and policy, as well as ways that you, as a nurse administrator, can communicate with diverse audiences in complex health care settings. You can also gain the tools to recruit, retain, develop, and evaluate a productive workforce to help your organization provide best care practices to your patients.

Nurse Educator Graduate Certificate

The 9-credit Nurse Educator Graduate Certificate can give you the tools to meet the diverse needs of students in classroom, clinical, and online educational settings. By exploring multiple theoretical perspectives of teaching and learning, as well as practical application of strategies, this curriculum can help prepare you to employ effective teaching methods.

This certificate also provides a foundation in the measurement and evaluation of your students by teaching you to strategically develop tests, interpret test results, assess clinical performance, and evaluate written assignments.

You can also explore factors that influence curriculum development, including faculty roles, program outcomes, curriculum evaluations, contextual factors, and issues with accreditation.

Begin Your Application Today

To begin taking courses, you need to submit an online application form for the program of your choice. To start the application process, visit worldcampus.psu.edu/nursing, choose your program of interest, and click on the “Apply Now” button.

You must be a currently licensed registered nurse to apply to Penn State’s online nursing programs. Non-Pennsylvania residents must hold a current license to practice professional nursing in at least one U.S. state or in a foreign country. International applicants will be assessed on a case-by-case basis. Pennsylvania residents must hold a current license to practice in Pennsylvania.

Admissions decisions for the graduate nursing programs are based on the quality of your credentials after a thorough review of your completed application portfolio.

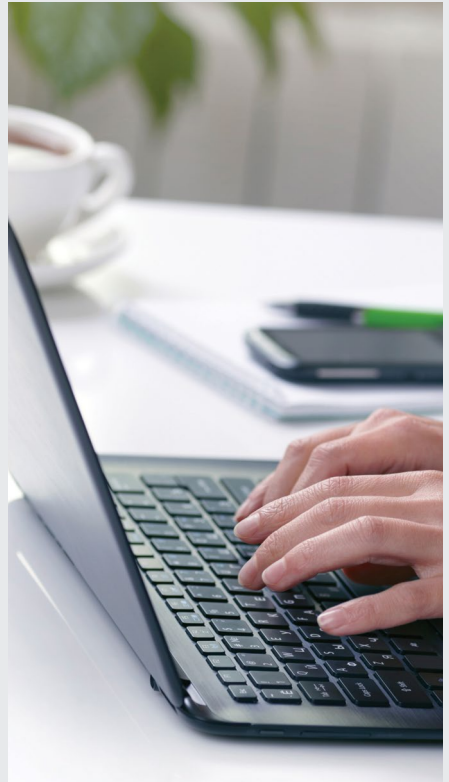
To apply to the MSN program, you must submit the following:

- › online application form and fee
- › official transcripts
- › references
- › a personal statement of purpose
- › TOEFL or IELTS score (if applicable)
- › GREs are not required, but will be reviewed as part of your application if you have the scores to submit

To apply to one of the certificate programs, you must submit the following:

- › online application form and fee
- › official transcripts
- › TOEFL or IELTS score (if applicable)

Please visit our admissions website for a more detailed description of the requirements and application process: worldcampus.psu.edu/admissions



Contact Us

Admissions Questions

pennstateonline@psu.edu

814-863-5386

worldcampus.psu.edu/admissions



PennState
World Campus

The Pennsylvania State University
128 Outreach Building
University Park, PA 16802



[@psuworldcampus](https://www.facebook.com/psuworldcampus)



[@PSUWorldCampus](https://twitter.com/PSUWorldCampus)



[Penn State World Campus](https://www.linkedin.com/company/penn-state-world-campus)



[@pennstateworldcampus](https://www.instagram.com/pennstateworldcampus)

This publication is available in alternative media on request.

Penn State is an equal opportunity, affirmative action employer, and is committed to providing employment opportunities to all qualified applicants without regard to race, color, religion, age, sex, sexual orientation, gender identity, national origin, disability or protected veteran status. Produced by Outreach and Online Education Marketing U.Ed. OUT 19-WC-0465/ajw/sss Copyright © 2019 The Pennsylvania State University